



## Fixed Wireless Broadband

---

An overview of the benefits of Dreamtilt fixed wireless broadband

Copyright ©2020 Dreamtilt Pty Ltd



Wireless networks utilise connections between nodes without the use of wires. Wireless networks have advantages to other connections such as copper lines or Fibre including fast and easy installation, reduced cost all while delivering high speeds.

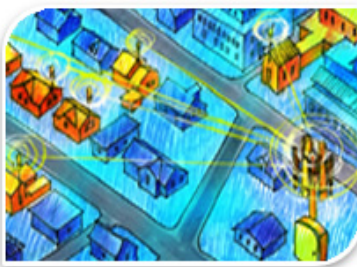
#### FIXED WIRELESS NETWORK

Fixed Wireless Networks are an alternative to 'wired' or 'terrestrial' Networks, which traditionally transport data between sites using copper or Fibre-optic cables in the ground.

Fixed Wireless is typically part of a Wireless WAN infrastructure connecting two fixed locations (such as buildings) with a directional radio antenna at each end of the signal. It is designed for various weather conditions, signal distances and bandwidths.

Radios and antennas are usually selected to make their transmission beam as narrow as possible and thus focus transmitted energy to their destination.

This increases reliability and reduces the chance of eavesdropping and/or data injection.



It's a cost-effective and extremely flexible way of enabling data communications between sites and providing access to the Internet without the need for leasing or installing cables.

#### WHAT IS DREAMTILT WIRELESS BROADBAND

Dreamtilt Wireless provides wireless Ethernet connections that can be used to transport voice, video and data. It's a total broadband access solution designed for extending networks wirelessly to provide broadband services to virtually anybody, in virtually any environment, for residential, business and industry applications.

#### DID YOU KNOW?

Customers experience and performance can vary greatly when using copper lines to connect to the Internet. Condition of the lines, distance from the exchange, poor cable joints and the noise on the line can all add to frustrating performance issues online



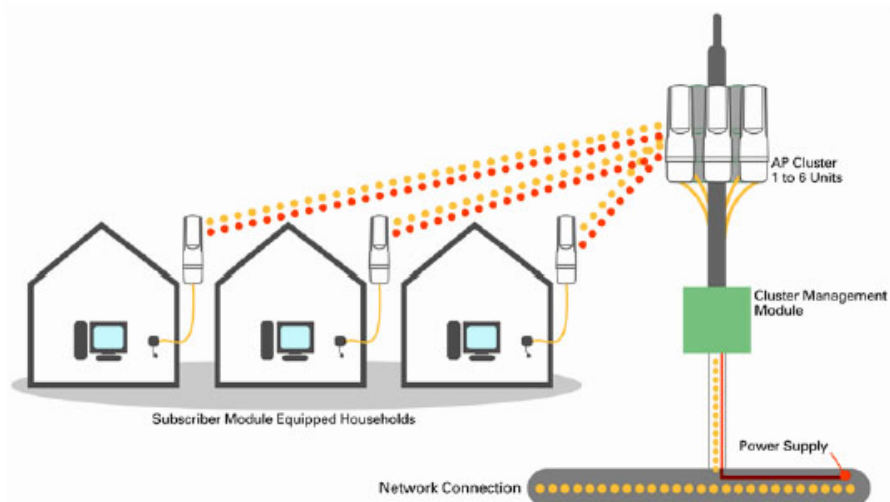
Wireless Broadband allows customers to enjoy the benefits of fast Internet connections without the need for leasing phone lines or fibre connections.

#### HOW DOES IT WORK

Dreamtilt Wireless Broadband service connects to a wireless router in your home or office just like most nbn or Cable services do. We simply plug the installed Ethernet cable into a wireless router (provided by Dreamtilt).

We then configure and secure the wireless router to allow your computers to connect either wirelessly or via an Ethernet connection. Once configured you are then connected to the Internet all the time!

Our installers install our specialised wireless equipment on your roof and then run an Ethernet cable inside. The wireless subscriber unit device installed on the roof links your home to one of our wireless towers.



## WHY DREAMTILT WIRELESS?

Dreamtilt Wireless is very, very fast. The connection is stable and consistent. And always on.  
And requires no phone line connection.  
And can be installed quickly - in some cases on the same day you order. And we are local.

Another significant benefit of Dreamtilt Wireless is that we have plans to suit all needs and requirements, from the casual online browser to the high speed gamer or binge watching Netflixer. There is also no fee to change plans or speeds, so you can adjust your plan month to month depending on your data or speed requirements.

Plus, if you add a VoIP account for your phone, then you can really save money on your phone call costs.

## INSTALLATION PROCESS

Dreamtilt Wireless creates an Internet connection via a wireless antenna system. A small white rectangular box, which includes a radio receiver/transmitter, will be installed on your roof. This subscriber unit will be pointed at the nearest Wireless access point tower.



Our professional installers will then run a CAT5 or CAT6 (depending on installation) wire into your home, office or business premises. We then connect this to a wireless router inside. Our installers then set up your computers to connect to the wireless service, secure the system, and ensure that you are receiving the best possible connection. After we finish, you simply enjoy astonishingly-rapid wireless Internet service.

When a customer orders Dreamtilt Wireless, we normally arrive for installation within the five days depending on availability. The installation and setup process normally takes around two to three hours and we complete the installation when you are present. In some instances of urgency, we can have you connected the same day.

## ABOUT THE NETWORK

The Dreamtilt Fixed Wireless network should not be confused with WiFi or mobile networks. WiFi is a WLAN (Wireless local area Network) protocol designed for short range, in-building portability.

Dreamtilt Fixed Wireless broadband serves much greater distances.

## DID YOU KNOW

Dreamtilt Wireless Broadband is ideal for Voice communications. Combined with Dreamtilt VoIP services customers enjoy low cost calls to anywhere without line rental costs. Our QoS on the network ensures clear calls, no delays or dropouts. Business can also combine this with our Cloud PBX for multiple phone extensions across one Internet connection.

It is delivered with a standard ethernet socket that can be connected directly to any computer, firewall, router or other ethernet device. Customers simply plug the blue cable into the ethernet socket that Dreamtilt installs at their premises. This is equivalent to plugging the cable into a modem. No other special configuration of the customers' equipment is required.

Dreamtilt uses a variety of proprietary wireless data radios selected from the leading carrier-grade equipment vendors. The most effective and reliable solution is selected for each application.

Unlike most other carriers in Australia, Dreamtilt wireless bypasses all telephone exchanges and the copper line network.

Each base station (transmission tower) is typically on a tall or medium height building / tower with an excellent line of sight over the Gladstone and surrounding regions.

Each base station comprises:

- Redundant backup power systems
- Networking equipment
- Point-to-point (PTP) backhaul radios "feeding" the Base station with internet connectivity
- Point-to-multipoint (PTMP) radios (sector radios) that distribute the service to customers. Typically, a sector radio will service 60-90 degrees using directional antennas.

Dreamtilt Wireless combines field-proven toughness with exceptional performance, security, ease-of-use and cost effectiveness.

With a broad array of Internet plans available, it can be configured to meet your current and future needs (residential, business or industry).

From home, to business, to industry, Dreamtilt wireless broadband is a cost effective, fast, and a real alternative to land based networks - ensuring connectivity and delivery of essential services to customers in the region.



#### **Alternative to Phone or Fibre Lines**

With Dreamtilt Wireless Broadband there is no need for a phone line or Fibre connections. This could save you time, money and frustration. Why wait, improve your Internet connection today with Dreamtilt Wireless Broadband and save ongoing costs.



#### **VoIP and Cloud PBX Services**

Combine Dreamtilt Wireless Broadband with VoIP or Cloud PBX services and you can really start saving on your telecommunication costs. Dreamtilt wireless broadband and VoIP is ideal for reducing your monthly costs.



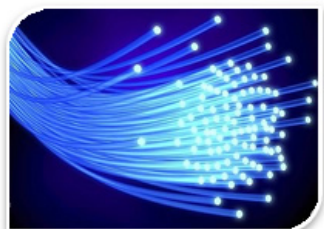
#### **No lock in contracts**

With no lock in contracts, Dreamtilt wireless broadband is perfect for short term or long term connections. Whether you are here for a short time or a long time - Dreamtilt wireless broadband plans are tailored for your needs



#### **Homes, Offices, Construction Sites, Industry, Anywhere ...**

Dreamtilt wireless can be cost effective for residents and business but also deployed anywhere for any event with sufficient bandwidth for numerous users. Perfect for building or construction sites, even short term events requiring Internet.



#### **Disaster Recovery**

Dreamtilt can provide an alternative solution in the event that a disruption occurs in your traditional terrestrial solution. No matter how well maintained a system is, at times they can be rendered inoperable. Prevent downtime with a redundant link.

## SUMMARY

Dreamtilt Wireless is the super-fast Internet service that lets you take advantage of the latest wireless technologies at your home, office or any location. And it's surprisingly inexpensive and cost effective. Think about these factors when you're making a decision:

- No phone line required
- No excess data fees
- Quick and easy installation
- Your own secured wireless network
- Low-cost VoIP calling

Don't those facts make Dreamtilt Wireless the obvious choice?

For more information, or to schedule an installation, visit our web site at [www.dreamtilt.com.au](http://www.dreamtilt.com.au) or call 1300 306 126.

## LEGAL DISCLAIMER

The material included in this Whitepaper has been compiled from a variety of sources and may include technical inaccuracies or typographical errors.

All information in this Whitepaper is provided to you "as is" without warranty of any kind, either express or implied, including, but not limited to, implied merchantability, fitness for a particular purpose or non-infringement. Dreamtilt does not warrant that this Whitepaper will be error-free.

Dreamtilt makes no warranties or representations as to the accuracy of the Whitepaper. Dreamtilt assumes no liability or responsibility for any errors or omissions in the content of the Whitepaper. Dreamtilt has used all reasonable efforts to ensure the accuracy of the Whitepaper, but reserves the right to change, in its sole discretion, the Whitepaper in any way and/or at any time without notice.

Dreamtilt shall not be liable for any special, incidental, or consequential damages, including without limitation, any lost revenues, lost profits, or third party claims resulting from the use or misuse of information herein, even if Dreamtilt has been advised of the possibility of such damages or for any claim by another party.

## Dreamtilt

62 Hanson Road  
Gladstone, QLD. 4680

P 1300 306 126 E [admin@dreamtilt.com.au](mailto:admin@dreamtilt.com.au)

[www.dreamtilt.com.au](http://www.dreamtilt.com.au)

